

ORIS

COLOR TUNER™

*Contract quality proofing: simple, fast and affordable,
on inkjet printers from Canon, Epson and HP*

Perfect Proofs Every Time!

■ The ORIS Digital Proofing System

ORIS Color Tuner is much more than an inkjet RIP. It is a **complete proofing system**, combining automation, color management, high-speed output and proofing-specific ink and paper. With ORIS, you can create **contract quality proofs** on affordable inkjet devices.

Winner of the GATF InterTech Award, ORIS Color Tuner was the first system of its kind to be certified by SWOP, FOGRA, SICOGIF, PPA and 3DAP. It includes **Setup Wizards, automatic color matching and automatic printer calibration**, so anyone – not just color gurus! – can easily calibrate a proofer. It also has selective color **correction** (CMYK fine tuning) to adjust for inkjet behavior, as well as **superior spot color handling**, support for **Hexachrome®** and multi-channel **Generic Output Profiles** for exceptional proof accuracy in commercial and packaging environments.

CGS proofing papers provide maximum proof accuracy and consistency over time. **Multiple printers** can be handled from a single system, and color-accurate **imposition proofing** is included.

ORIS has a ScreenDot option for **color-accurate screened proofs**. It also **accepts all major digital file formats**, making it ideal for any prepress system. Finally, the integrated **ORIS Soft Proof™ option** makes ORIS Color Tuner the perfect environment for **remote proofing** at agency and print buyer sites.

■ Powerful Output Options

ORIS Color Tuner produces contract quality proofs on **the latest Canon, Epson and Hewlett Packard inkjet devices**, including the Canon iPF5000, the Epson 4800, and a large selection of wide-format devices. The system uses the printer's **native CMYK drivers and dithering patterns** – so you don't need to worry about compatibility or output quality at any resolution.

Color Tuner also supports all other Windows-compatible printers, including **digital color copiers**, for designers and production people who need to create accurate color “comps” before outputting the final contract proof. The soft proof option works with **industry-standard PDF**, and can be displayed on any high quality, calibrated monitor, including Apple, Eizo, Sony and others.





ORIS Color Tuner Benefits

Significantly lower cost-per-proof, compared with analog or so-called “high-end” digital proofs

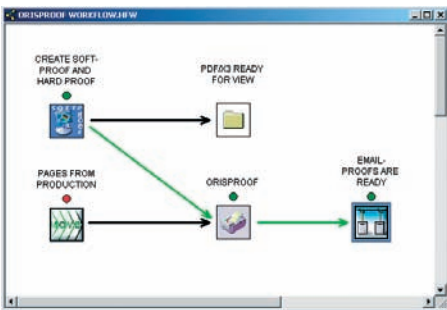
Consistently accurate color, using ORIS’ exclusive fine tuning, AutoCal, qualified ink and CGS proofing papers

High-speed, efficient throughput, reducing the amount of valuable time spent on proofing.

Lower integration costs, thanks to ORIS’ compatibility with major workflow systems and digital file formats

Lower labor costs, thanks to ORIS’ new Setup Wizard and Calibration Wizard – which can be done quickly, even by non-experts

New business opportunities, made possible by ORIS’ support for Hexachrome, multi-channel profiles and custom color proofing.



The ORIS Color Tuner Workflow

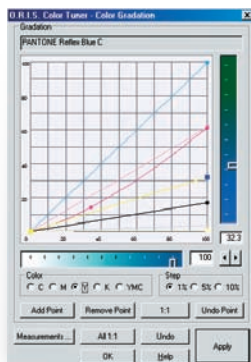
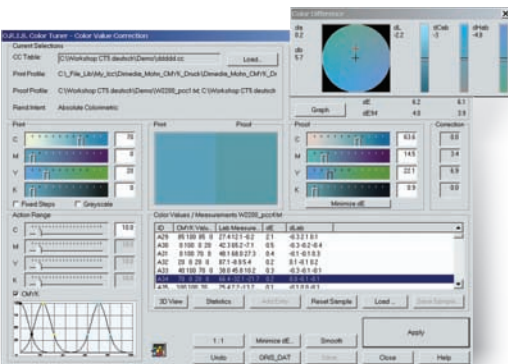
The Setup Wizard gives anyone – even a color novice – the ability to configure, linearize, calibrate and color match any output device. Color Tuner’s iterative AutoCal process virtually eliminates color deviations, without the need for subjective color expertise.

Selective Color Correction is a unique ORIS feature, allowing for fine tuning of individual CMYK combinations. Other products, relying solely on general tone curves, cannot match Color Tuner’s accuracy.

Spot Color Management, including support for Hexachrome, is also uniquely handled in Color Tuner. By using a separate table to convert Lab values to CMYK, Color Tuner takes full advantage of the printer’s wide color gamut, without adversely affecting CMYK images and other data.

Double-Sided Imposition Proofing is included in Color Tuner, allowing for easy manual imposition proofing at no additional cost. Automatic imposition proofing options are also available.

Hotfolders make the proofing process simple. Once Color Tuner is set up, users simply print to a hotfolder from any Mac or Windows PC. Both local and remote proofing, as well as integrated soft proofing, can be easily automated.



■ **Prepress Data Formats**

- PDF 1.3-1.6 (composite or separated), PDF/X-1a and PDF/X-3
- PostScript (composite or separated)
- EPS ● DCS 1 and DCS 2 (single or multiple files)
- JPEG ● TIFF ● TIFF/IT-PI (CT/LW/HC, composite or separated)
- 1-bit TIFF ● Scitex Handshake CT/LW ● Scitex NLW, NCT ● CopyDot

■ **System Recommendations**

- Processor: Hyperthreading or dual-CPU, 2.0 GHz or more
- Memory: 512 MB or more
- Storage: 18 GB or more (two or more drives recommended for high volume production)
- Printer Interface: FireWire (recommended) or USB
- 100 mbps Ethernet
- CD-ROM drive
- Microsoft Windows 2000, XP or Server 2003
(Windows Server or third-party networking utility recommended for data exchange with Mac systems)
- Apple OS X (10.2 or higher) for Personal Edition

■ **Output Devices**

Recommended **Canon imagePROGRAF** models include the new iPF5000 (A4+ size, 13"x19" sheet media), W6400 (635mm, 24" roll media) and W8400 (1118mm, 44" roll media), as well as the W2200, W2200S, W7250, W7200 and W8200.

Recommended **Epson Stylus Pro** models include the 4800 (432x559mm, 17"x22" sheet media, or 432mm, 17" roll media), 7800 (635mm, 24" roll media) and 9800 (1118mm, 44" roll media), as well as the 4000, 7600, 9600 and 10600.

Recommended **Hewlett Packard DesignJet** models include the 500, 800, 4000, 5000 and 5500. ORIS Color Tuner also supports any output device with a Windows driver, including digital color copiers – for creative “comp” output.

■ **CGS Consumables**

The ORIS Digital Proofing System is an effective combination of color management, plus paper and ink that have been customized and tested for proofing performance in a wide range of publishing and printing environments. Call for more information on consumables specifically designed to meet your proofing requirements.

*Call or email today, to schedule a demonstration
of the world's leading digital proofing system.*



www.cgs-oris.com

EUROPE • ASIA • AFRICA • AUSTRALIA

CGS Publishing Technologies International GmbH • Kettelerstraße 24 • D-63512 Hainburg/Germany
Phone: +49 6182 9626 0 • Fax: +49 6182 9626 99 • Email: info@cgs.de

NORTH AMERICA • SOUTH AMERICA

CGS Publishing Technologies International LLC • 100 North Sixth Street • Minneapolis, MN 55403 USA
Phone: +1 (612) 870 0061 • Fax: +1 (612) 870 0063 • Email: info@cgsusa.com