



DynaStrip is the new industry standard in imposition. Print professionals worldwide rely on DynaStrip for its superior imposition capabilities and unparalleled flexibility.

DynaStrip operates on Macintosh and Windows platforms, and accepts PDF, PostScript, EPS and DCS files from over 100 applications. It can output to any printer, digital imaging device, imagesetter or platesetter. Up to 10 different simultaneous setups can be created to combine any plate with any output device. DynaStrip also enables populated or non populated imposition, and outputs in both PJTF and JDF.

Its powerful object-oriented architecture allows you to fully customise and control your imposition layout. Create and save basic templates, and modify them on the fly for custom jobs, keeping template creation and management to a minimum. Ganging of jobs provides an easy means to maximise your press sheet and reduce waste by combining different jobs on the same sheet. You can even ensure imposition integrity with the help of DynaStrip's Raster Mode (TIFF preview) and direct-layout PDF previews.

Easy to set up within your existing prepress infrastructure and easy to learn, DynaStrip ensures that your prepress team is up and creating its imposition jobs in no time.

DynaStrip 4.0 (Macintosh) now allows users to seamlessly operate in OS X, OS 9 and Classic modes. This compatibility lets users take advantage of OS X's multitasking capabilities, with superior stability and management of application memory. Both Macintosh and Windows versions have an improved user interface, JDF & PJTF support, direct-layout PDF page preview and the ability to impose trapped PDFs that use the annotation layer to embed trapping information.

Specialised Versions:



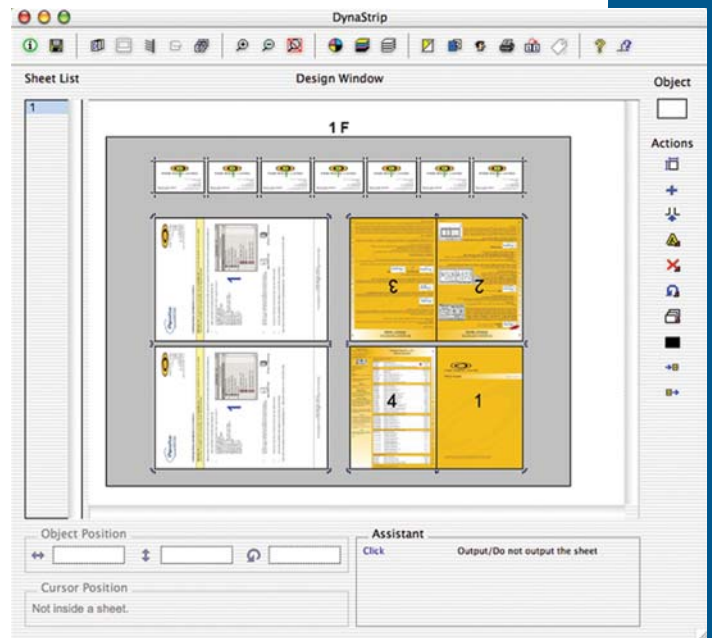
See over for more information.

Macintosh Requirements:

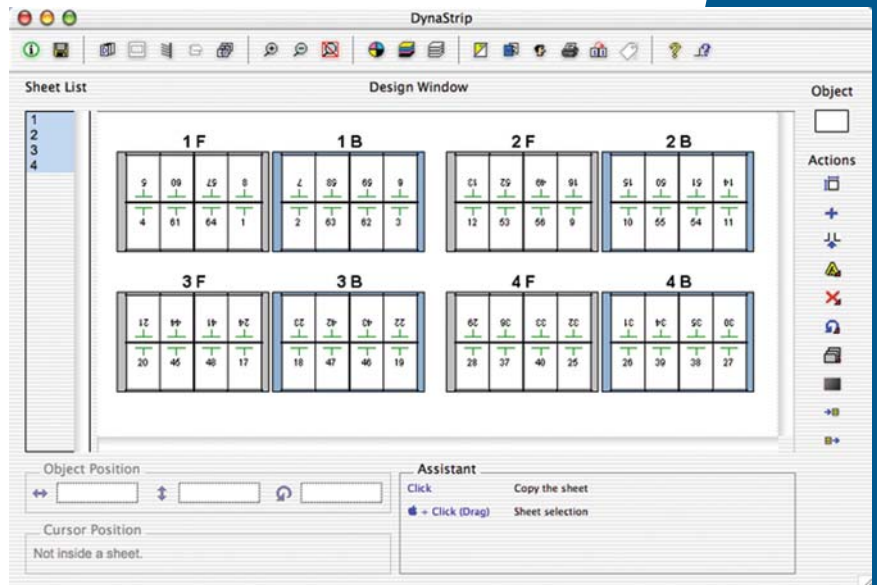
- PowerMac G3 or better
- Mac OS 9.1+ or Mac OS X
- 128Mb of RAM
- 40Mb Disk Space (OS 9)
- 3.0Gb Disk Space (OS X)
- CD-ROM Drive

Windows Requirements:

- Pentium 200MHz or better
- Windows 95 or above
- 96Mb of RAM
- 40Mb Disk Space
- CD-ROM Drive
- Adobe Acrobat 4 or above



Ganging of differently sized files with previews turned on



A standard sheet work imposition with previews turned off



\*Features based on DynaStrip 4.0.x running on Mac OS X or Windows. Feature set may differ on Mac OS 9.x.





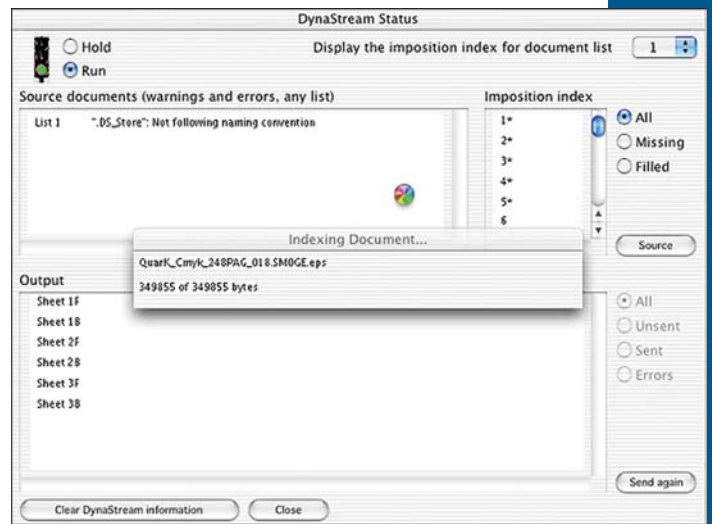
DynaStrip AUTOMATION is critical in a prepress environment where repetitive tasks, such as building document input lists, assigning application filters and outputting assembled flats, require highly automated and reliable hot-folder based setups.

DynaStrip AUTOMATION combines the superior imposition capabilities true to classic DynaStrip with specialised page-pairing tools to enable newspaper and magazine printers to efficiently manage and impose document files that arrive in different orders and at different times.

Create up to 200 hot-folder-based setups to maximise the number of the jobs you can process at any given moment. Automatically output any complete flat to increase your productivity on tight deadlines. Effectively synchronise several imposition jobs at once and dispatch them to a variety of RIPs or output devices. Perform last-minute corrections by resending the corrected pages to the hot folder and reinitiating output.

Features:

- Simple Hot Folder Setups - Create up to 200 hot folders anywhere on the network
- Automatic Output - DynaStrip AUTOMATION will automatically output any flat that has all its pages ready.
- Processing Power - Greatly reduces turnaround time for the jobs you impose time and time again.

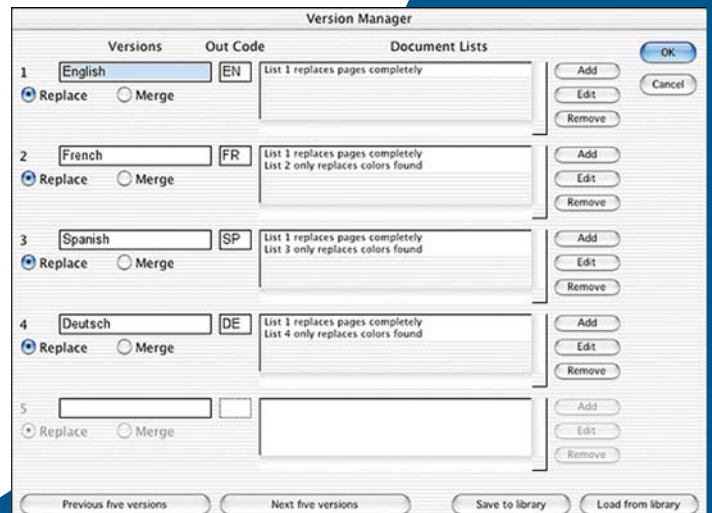


DynaStrip AUTOMATION outputting filled plates

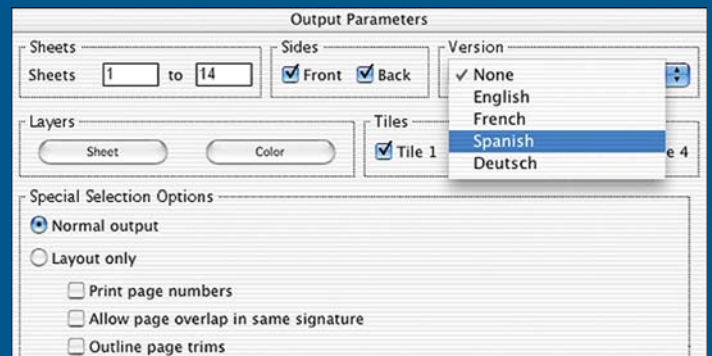


DynaStrip FUSION eliminates the hassles and potential errors of managing several different versions of the same document.

DynaStrip FUSION combines the superior imposition capabilities true to classic DynaStrip with specialised versioning tools for printers that cater to clients that publish versioned documents, such as location-specific shopping catalogues and fliers, and multilingual documents.



Specifying which separations or complete pages need replacing



Select which version you want to print in the output window

Create up to 200 versions of the same job template, without layering, to maximise your client's level of document customisation while ensuring your productivity in delivering the job. Easily configure your version manager to better coordinate which document versions are to be outputted and in what sequence. Re-edit your versions on the fly for timely quality control.